

OVER **SIXTY**  
RESEARCHERS

**SEVENTEEN**  
INSTITUTIONS

**EIGHT**  
EU COUNTRIES

**FIVE**  
YEARS

**ONE**  
GROUNDBREAKING  
PROJECT



### DID YOU KNOW?

According to the 2011 census, almost 380,000 people in Scotland speak a language other than English at home.

The Scottish government's 1+2 language plan means that over the next few years, all children will start learning two languages at primary school.

You don't have to be perfect to be bilingual. Bilingualism just means using more than one language, even if you sometimes make mistakes.



This project has received funding from the European Union's Seventh Framework Programme for research, technological development and demonstration under grant agreement no. 613465.

## Speaking more than one language

We know that speaking more than one language can have a positive impact on people's lives.

Being bilingual has been associated with **social**, **linguistic**, and **cognitive** benefits.

But there are lots of other things we don't yet know, for example:

What factors have the most influence on maintaining minority languages like Gaelic?

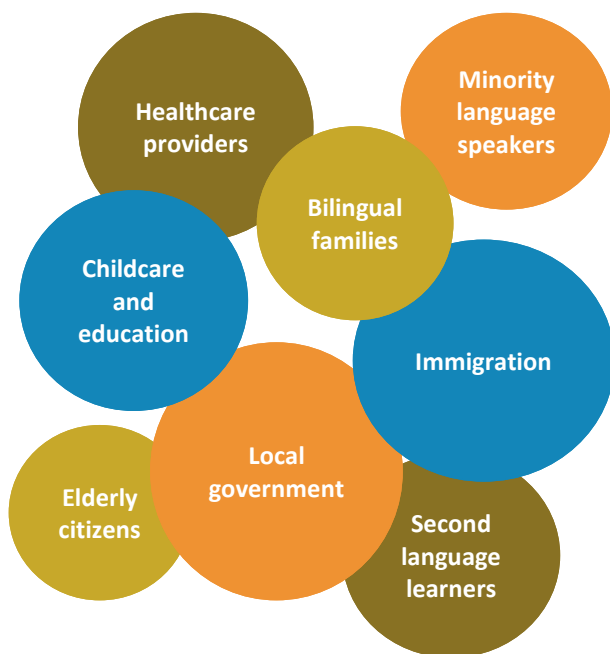
How can we best help bilingual people who have suffered language loss after a stroke?

What happens in our brains when native and non-native speakers talk to each other?

# The AThEME project

**AThEME** is a major EU-funded project bringing together world-class researchers from all over Europe.

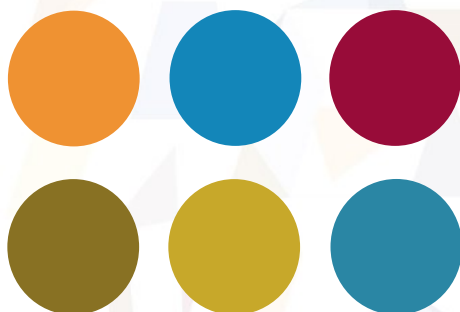
Together, these researchers will increase our understanding of what it means to speak multiple languages in Europe today.



“The knowledge gained from the AThEME project will make real and tangible differences to people’s lives all around Europe.”

**Antonella Sorace**,  
Professor of  
Developmental  
Linguistics at the  
University of Edinburgh  
and director of  
Bilingualism Matters

Visit the project website to find out more!  
<https://vre.leidenuniv.nl/vre/atheme/public>



# Contact us:

AThEME project  
Leiden University  
Centre for Linguistics  
Postbus 9515  
NL-2300 RA Leiden  
Netherlands

[multiling@hum.leidenuniv.nl](mailto:multiling@hum.leidenuniv.nl)

<https://vre.leidenuniv.nl/vre/atheme/public>

Leaflet produced by **Bilingualism Matters**, an AThEME Project partner and public engagement centre at the University of Edinburgh



THE UNIVERSITY of EDINBURGH  
School of Philosophy, Psychology  
& Language Sciences



BASQUE CENTER  
ON COGNITION, BRAIN  
AND LANGUAGE



Universiteit Utrecht

DE  
taal  
STUDIO



Universitat  
Pompeu Fabra  
Barcelona



Universidad  
del País Vasco



Euskal Herriko  
Unibertsitatea



UNIVERSITÀ DEGLI STUDI  
DI TRENTO



UNIVERSITÉ DE NANTES



THE UNIVERSITY of EDINBURGH



KONINKLIJKE NEDERLANDSE  
AKADEMIE VAN WETENSCHAPPEN



Universiteit  
Leiden  
The Netherlands



Universität  
Konstanz



Sveučilište u Rijeci  
University of Rijeka